

Condor 2 with iGlide

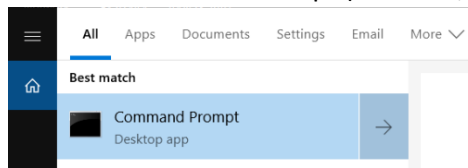
Jan Ahlers // Hamburg // April 27, 2020 // v0.3

*No guarantees for correctness or liability for issues resulting from adapting these settings!
Let me know any questions or ideas for improvement at jan.ahlers@web.de*

Please note that I am not an expert for NMEA data streams, serial ports, iGlide tweaking etc. :-) ...just a pilot, who wanted to use iGlide with Condor ;-)

Configuring iGlide

- Find the IP address of the computer on which Condor 2 is running:
 - Start the Command Prompt (to locate, e.g. type "cmd" in Windows file search)



- Execute the "ipconfig" command and note the IPv4 address (marked in yellow in the example below)

```
Eingabeaufforderung
(c) 2019 Microsoft Corporation. Alle Rechte vorbehalten.
C:\Users\janah>ipconfig

Windows-IP-Konfiguration

Ethernet-Adapter Ethernet:

    Medienstatus. . . . . : Medium getrennt
    Verbindungsspezifisches DNS-Suffix:

Drahtlos-LAN-Adapter LAN-Verbindung* 1:

    Medienstatus. . . . . : Medium getrennt
    Verbindungsspezifisches DNS-Suffix:

Drahtlos-LAN-Adapter LAN-Verbindung* 2:

    Medienstatus. . . . . : Medium getrennt
    Verbindungsspezifisches DNS-Suffix:

Drahtlos-LAN-Adapter WLAN:

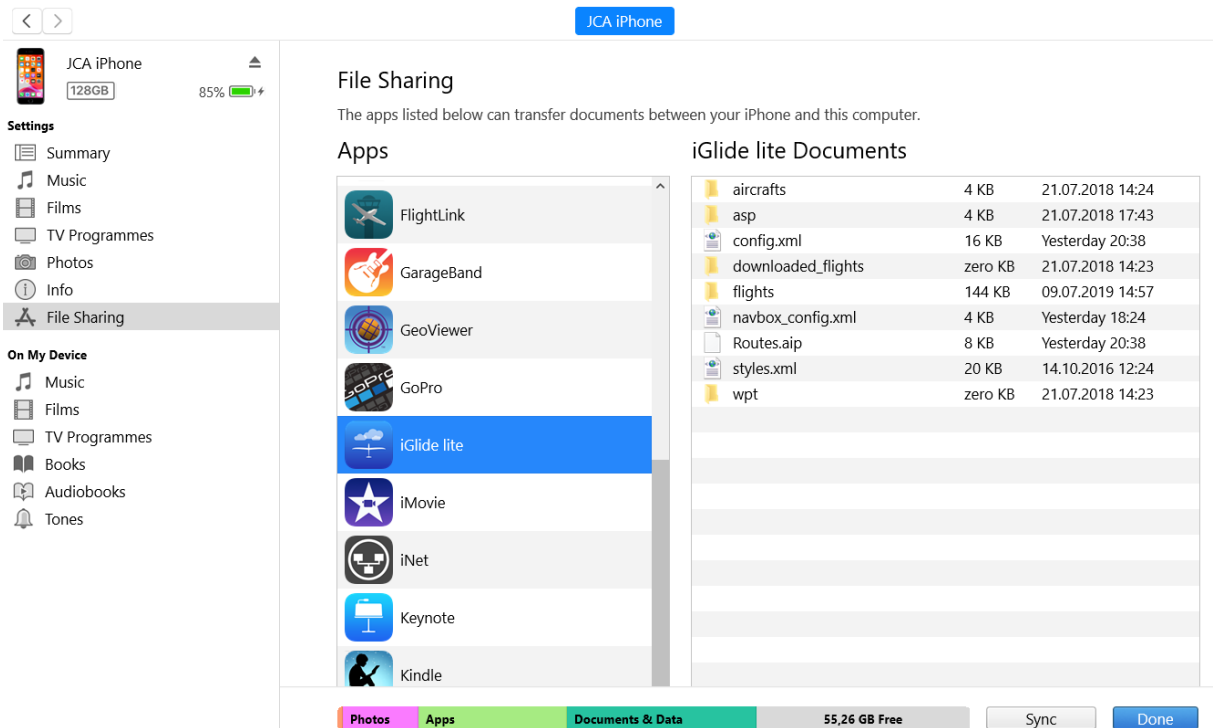
    Verbindungsspezifisches DNS-Suffix: fritz.box
    IPv6-Adresse. . . . . : 2001:16b8:6828:fa00:894a:6dc0:7479:4ab8
    Temporäre IPv6-Adresse. . . . . : 2001:16b8:6828:fa00:6d2a:57f3:ca65:afb0
    Verbindungslokale IPv6-Adresse . . : fe80::894a:6dc0:7479:4ab8%17
    IPv4-Adresse . . . . . : 192.168.178.28
    Subnetzmaske . . . . . : 255.255.255.0
    Standardgateway . . . . . : fe80::ca0e:14ff:fe6f:71ad%17
                                192.168.178.1

Ethernet-Adapter Bluetooth-Netzwerkverbindung 2:

    Medienstatus. . . . . : Medium getrennt
    Verbindungsspezifisches DNS-Suffix:

C:\Users\janah>
```

- Start iTunes and connect to the iPhone or iPad on which iGlide is installed
- Select "File Sharing"
- Look for "iGlide" in the "Apps" listing and then move the file "config.xml" to the Windows desktop with drag & drop



- Open the file "config.xml" with a text editor
- Look for the section "<CONNECTIONS>" and insert the previously noted IP address under "<WIFI_HOST>" as shown below; save the file

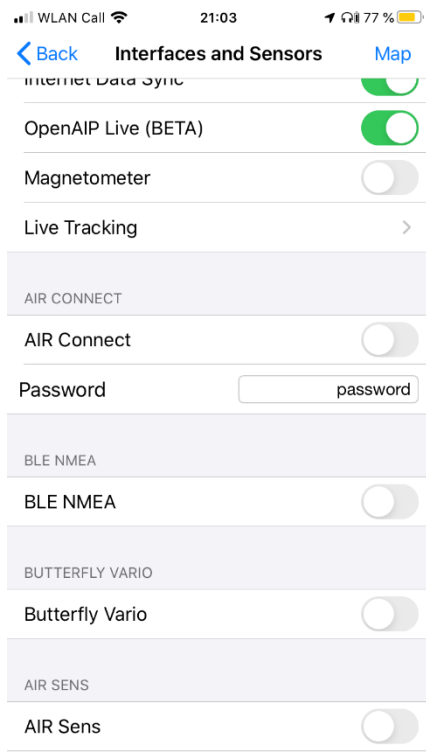
```

<CONNECTIONS>
  <SIMULATOR_ENABLE>FALSE</SIMULATOR_ENABLE>
  <FLYTECSSENSOR_ENABLE>FALSE</FLYTECSSENSOR_ENABLE>
  <BLUETOOTH_NMEA_ENABLE>FALSE</BLUETOOTH_NMEA_ENABLE>
  <BLUETOOTH_NMEA_USEWIND>TRUE</BLUETOOTH_NMEA_USEWIND>
  <BLUETOOTH_NMEA_INVERTWIND>FALSE</BLUETOOTH_NMEA_INVERTWIND>
  <BLUETOOTH_NMEA_USECLIMBRATE>TRUE</BLUETOOTH_NMEA_USECLIMBRATE>
  <BLUETOOTH_NMEA_USEPRESSUREALT>TRUE</BLUETOOTH_NMEA_USEPRESSUREALT>
  <BLUETOOTH_NMEA_PRESSUREALTIQNH>FALSE</BLUETOOTH_NMEA_PRESSUREALTIQNH>
  <WIFI_PASSWORD></WIFI_PASSWORD>
  <WIFI_ENABLE>FALSE</WIFI_ENABLE>
  <BUTTERFLY_VARIO_ENABLE>FALSE</BUTTERFLY_VARIO_ENABLE>
  <WIFI_HOST>192.168.178.28</WIFI_HOST>
  <WIFI_PORT>2000</WIFI_PORT>
  <WIFI_USEWIND>TRUE</WIFI_USEWIND>
  <WIFI_INVERTWIND>FALSE</WIFI_INVERTWIND>
  <WIFI_USELIVEWIND>FALSE</WIFI_USELIVEWIND>
  <WIFI_USECLIMBRATE>TRUE</WIFI_USECLIMBRATE>
  <WIFI_USEPRESSUREALT>TRUE</WIFI_USEPRESSUREALT>
  <WIFI_PRESSUREALTIQNH>TRUE</WIFI_PRESSUREALTIQNH>
</CONNECTIONS>

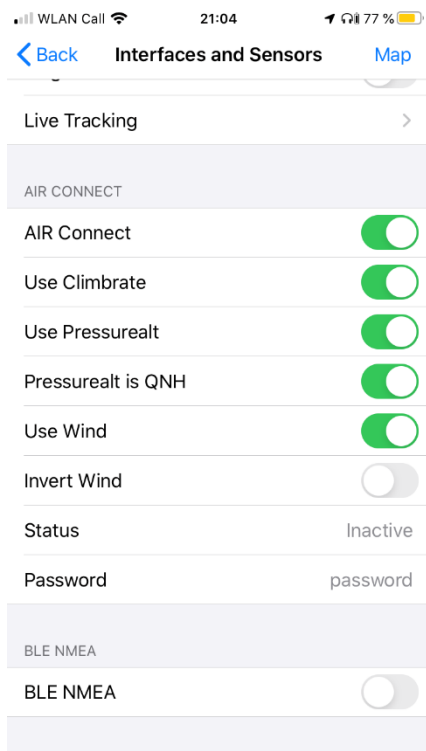
```

- Move "config.xml" back into iTunes via drag & drop (into the same location it was previously copied from) and select "Replace"
- Sync iTunes with the iPhone or iPad

- Start iGlide on the iPhone or iPad
- Settings → Interfaces and Sensors
- Set a password of your choice for "AIR Connect" (it is not needed elsewhere in this context, it is just required to activate "AIR Connect"; minimum 5 characters)

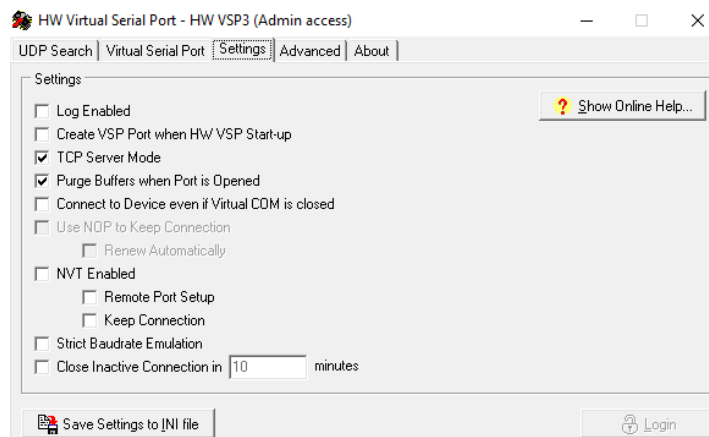


- Activate "AIR Connect" (status still shows "Inactive", that's normal)

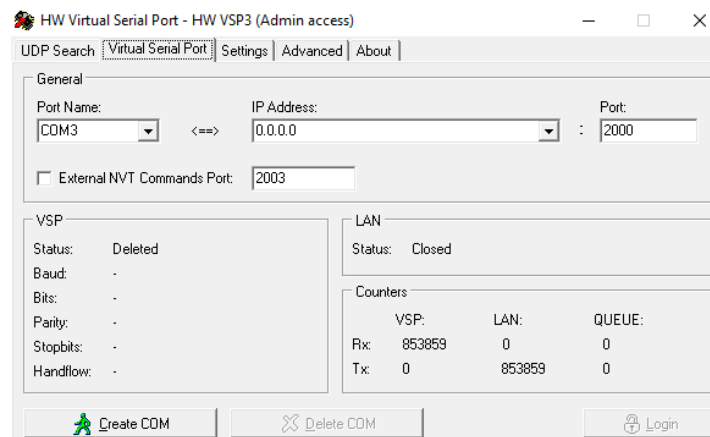


Installing & configuring program "HW Virtual Serial Port"

- Download the free tool for setting up a virtual COM port at <https://www.hw-group.com/software/hw-vsp3-virtual-serial-port> (Single version)
- Install on the same computer as Condor 2
 - If prompted whether firewall exceptions shall be set, approve
- Start program "HW Virtual Serial Port"
- Login in with "admin" (standard)
- Tab Settings: remove all checks except:
 - TCP Server Mode
 - Purge Buffers when port is opened



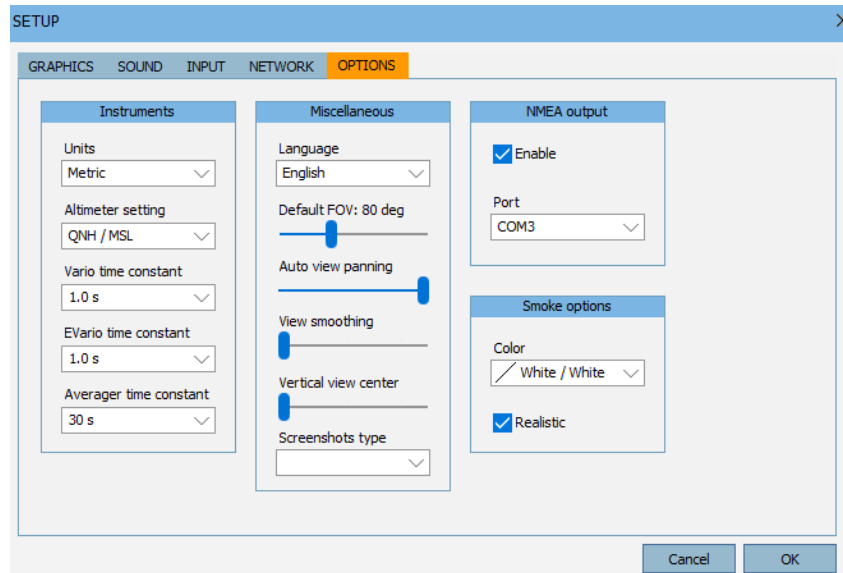
- Tab Virtual Serial Port:
 - COM3
 - IP: 0.0.0.0
 - Port: 2000



- Click "Create COM"
- Wait until VSP status switches to "Created" and LAN status switches to "Connected"
- Keep this program running during your Condor 2 session, minimize if needed

Configuring Condor 2

- Start Condor 2
- Setup → Options → NMEA Output
 - Enable
 - Port: COM3



- Start a flight
- Check proper functionality:
 - In the program "HW Virtual Serial Port"
 - Tab Virtual Serial Port, section Counters:
 - Rx VSP should be incrementing
 - Tx LAN should be incrementing
 - In iGlide
 - iGlide should show "Connected" in Settings → Interfaces and Sensors → AIR Connect
 - Your plane should appear on the map in the place Condor 2 has put you ;-)

Enjoy your flight!